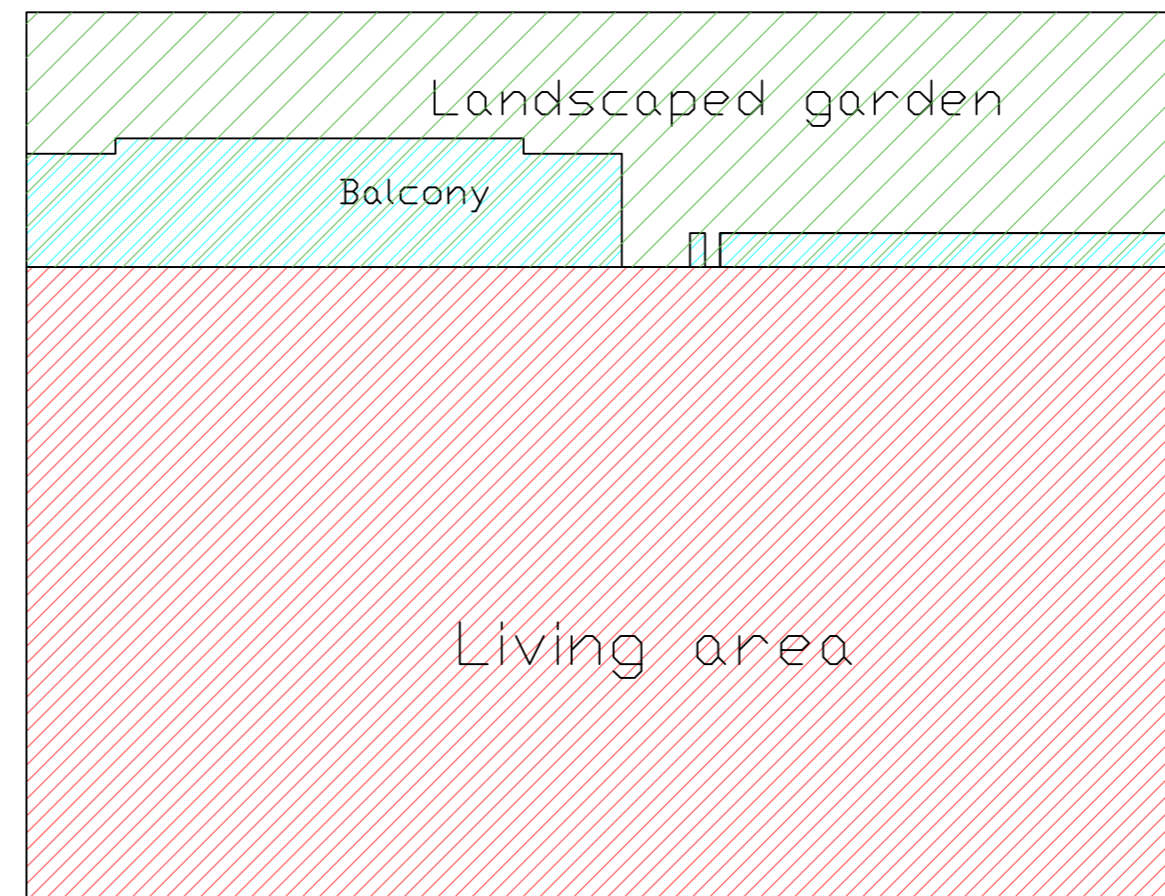
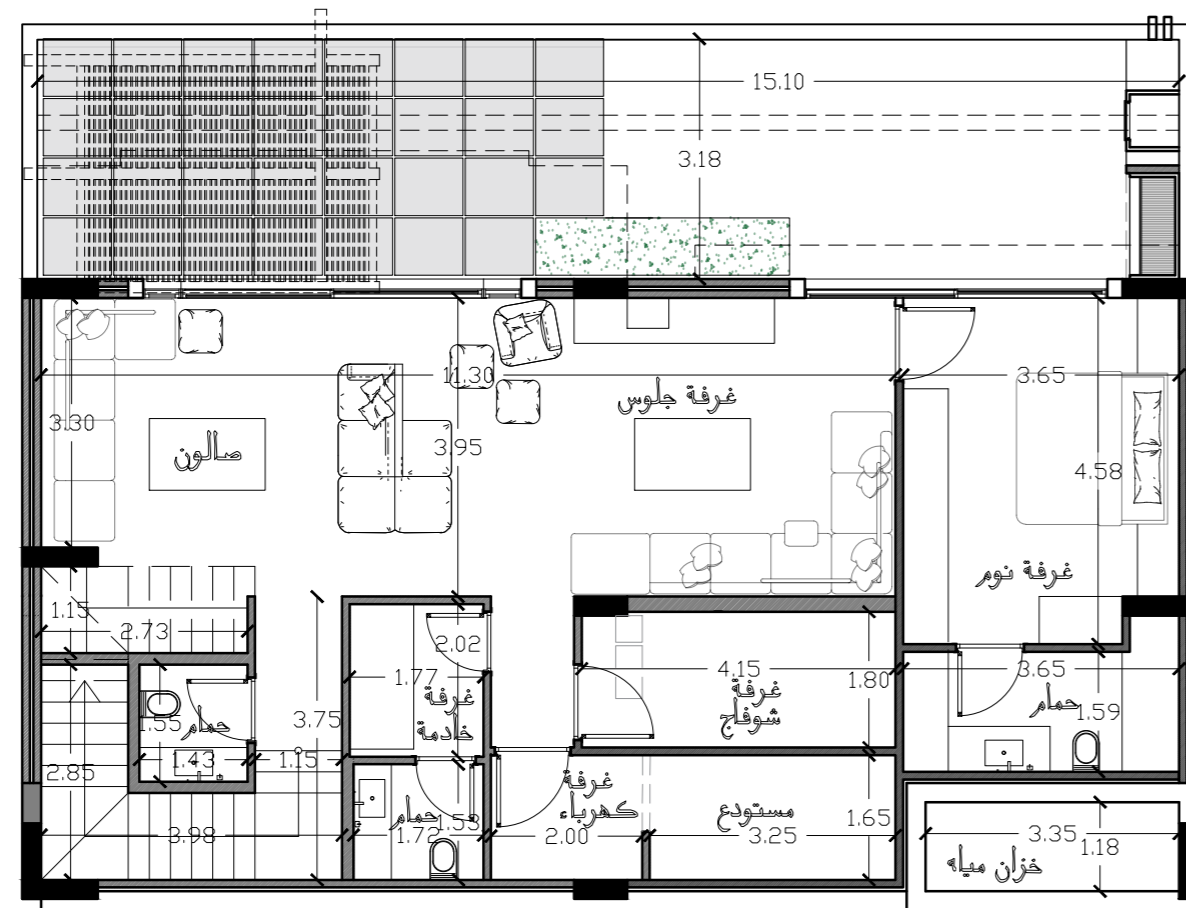

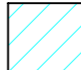






# Villa 46 Total Saleable Area : 450 m<sup>2</sup>

Type J

## Basement Plan

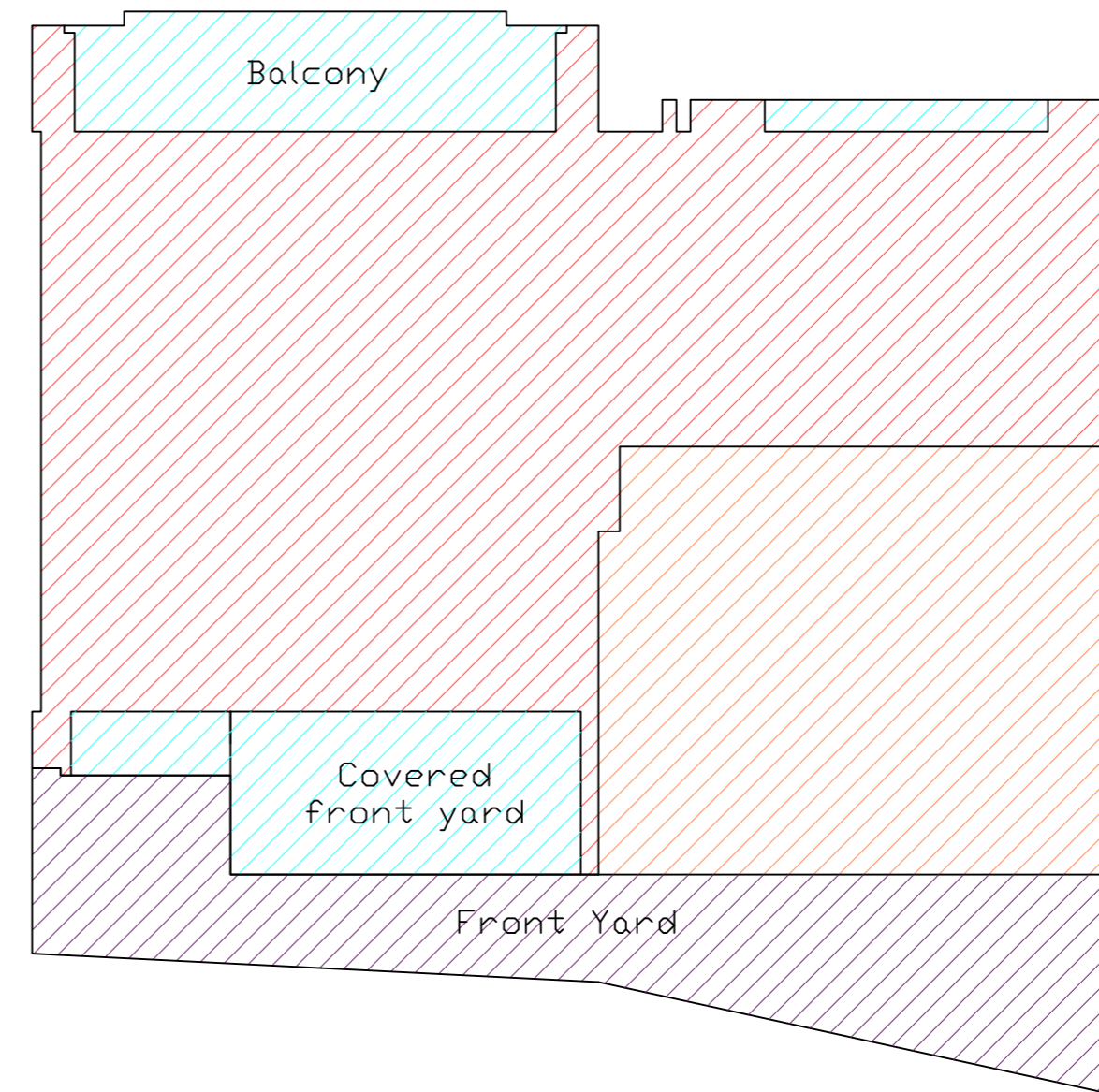
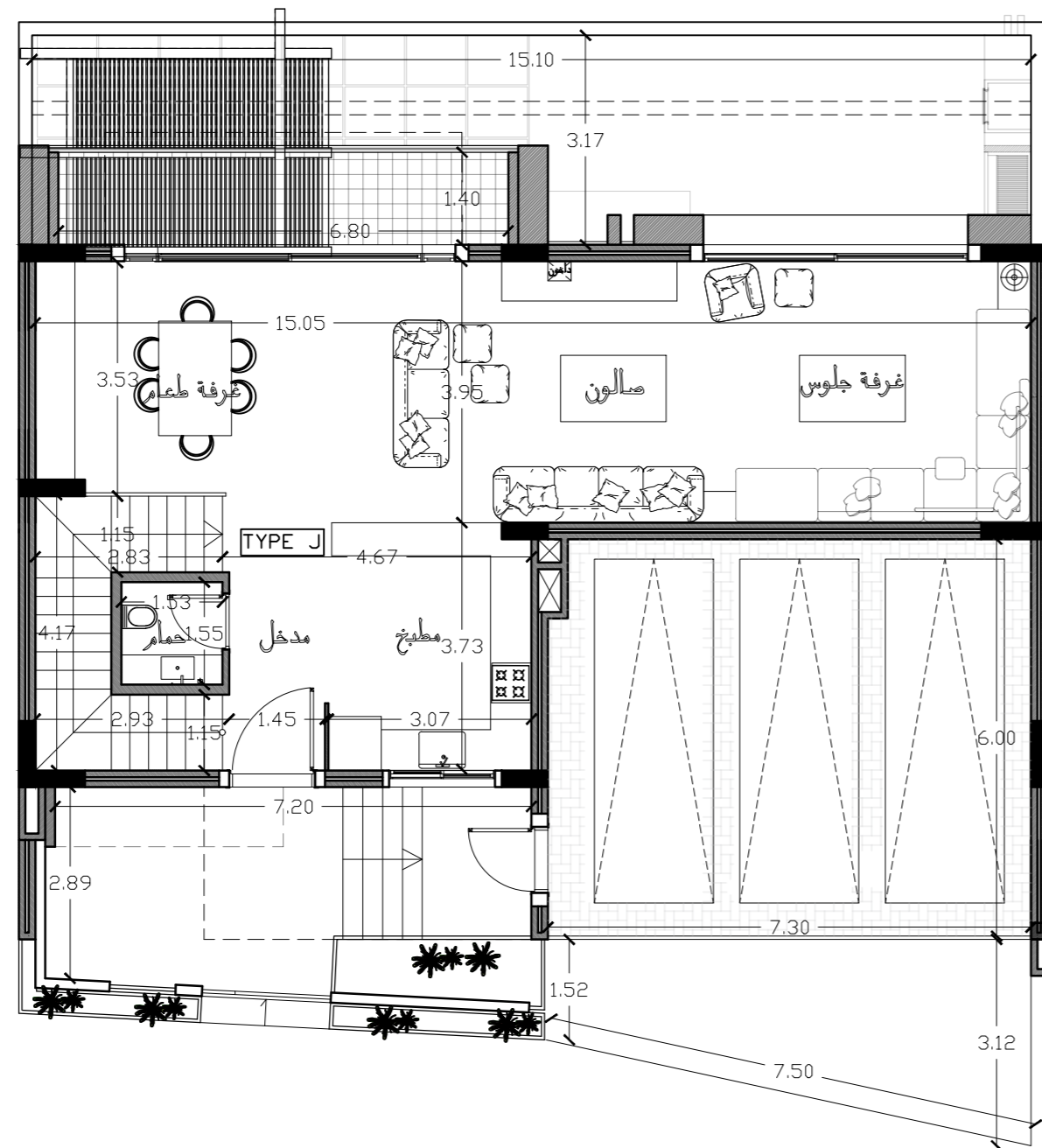


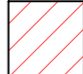
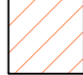
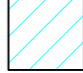


|   |                   |                    |
|---|-------------------|--------------------|
|  | Living Area       | 128 m <sup>2</sup> |
|  | Balcony           | 16 m <sup>2</sup>  |
|  | Landscaped Garden | 36 m <sup>2</sup>  |
|  | Garden            | 0 m <sup>2</sup>   |
|  | Front Yard        | 0 m <sup>2</sup>   |
|  | Outdoor Parking   | 0 m <sup>2</sup>   |

# Villa 46

## Type J

### Ground Floor Plan

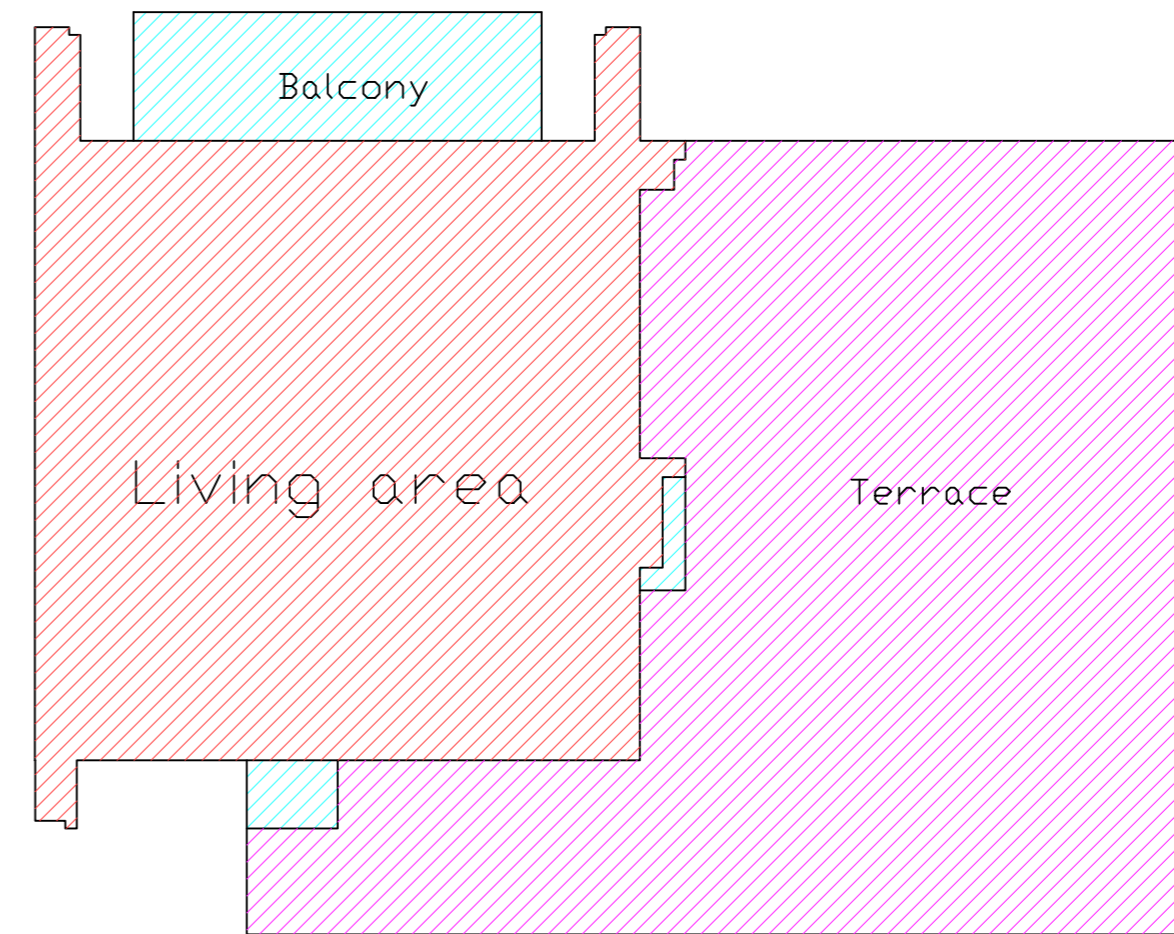
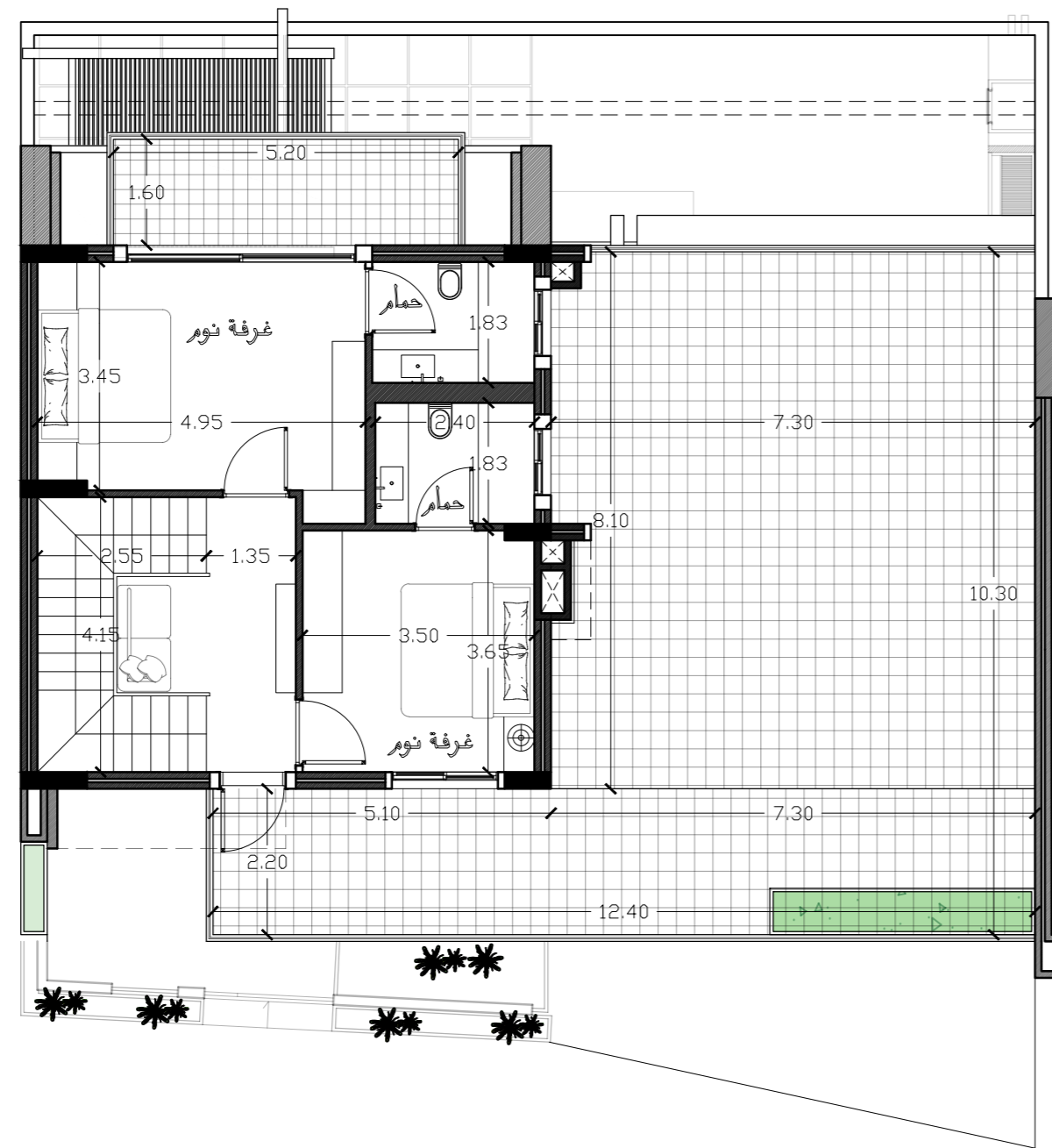


|   |                              |                    |
|---|------------------------------|--------------------|
|  | Living Area                  | 103 m <sup>2</sup> |
|  | Covered Parking              | 44 m <sup>2</sup>  |
|  | Balcony + covered front yard | 27 m <sup>2</sup>  |
|  | Front Yard                   | 32 m <sup>2</sup>  |
|  | Outdoor Parking              | 0 m <sup>2</sup>   |

# Villa 46

## Type J

### First Floor Plan



|  |             |                   |
|--|-------------|-------------------|
|  | Living Area | 69 m <sup>2</sup> |
|  | Balcony     | 11 m <sup>2</sup> |
|  | Terrace     | 87 m <sup>2</sup> |

