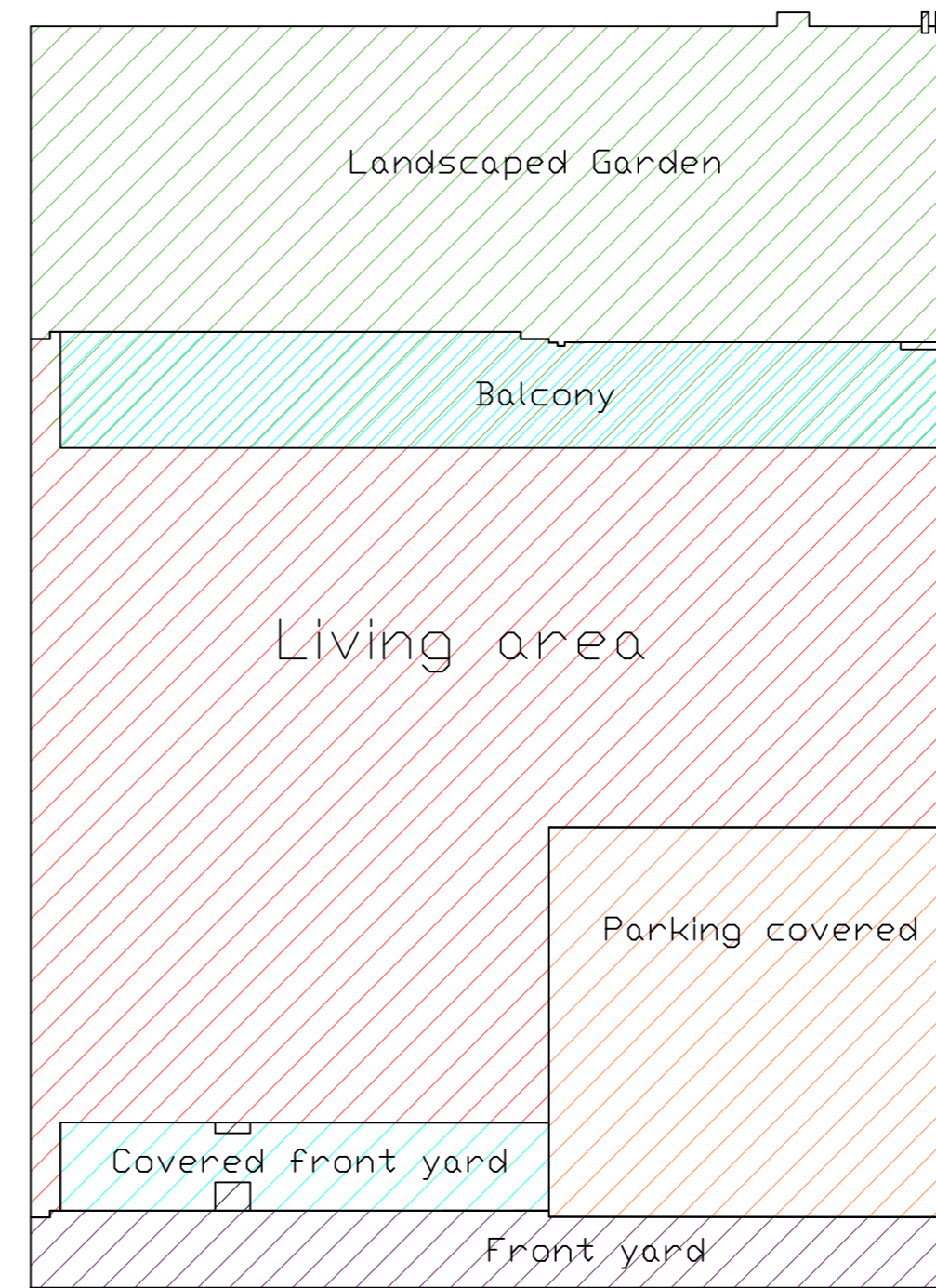
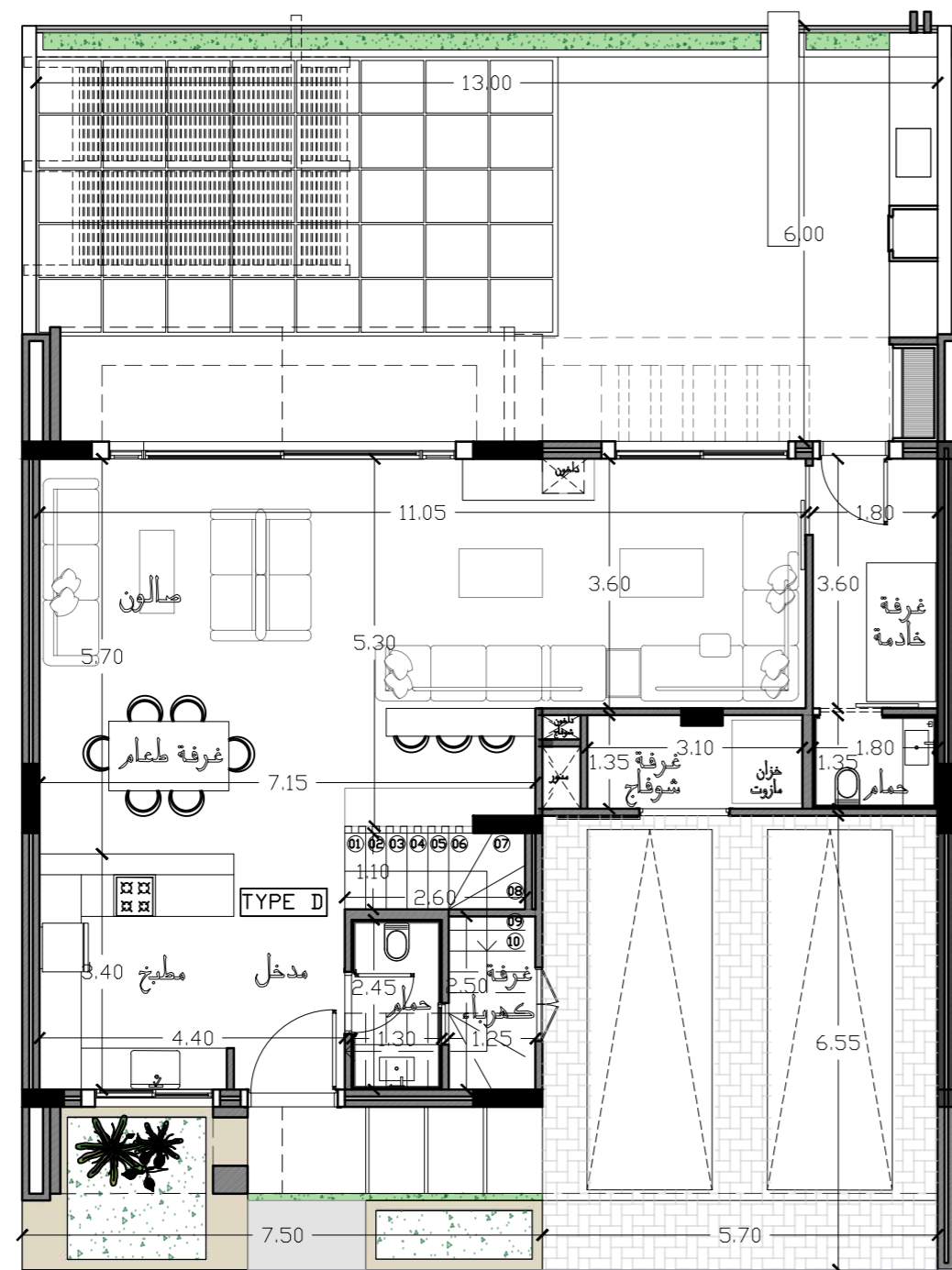



Villa 55 Total Saleable Area : 300 m²

Type D

Ground Floor Plan

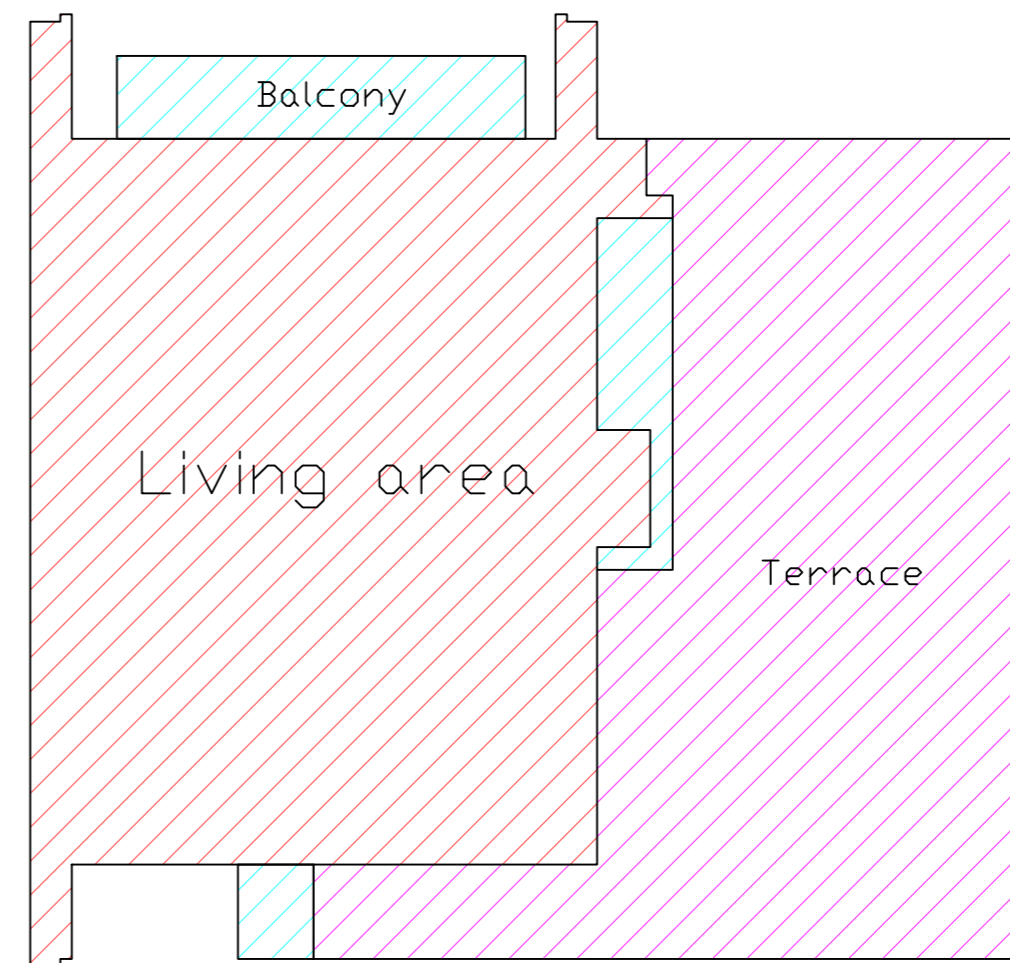
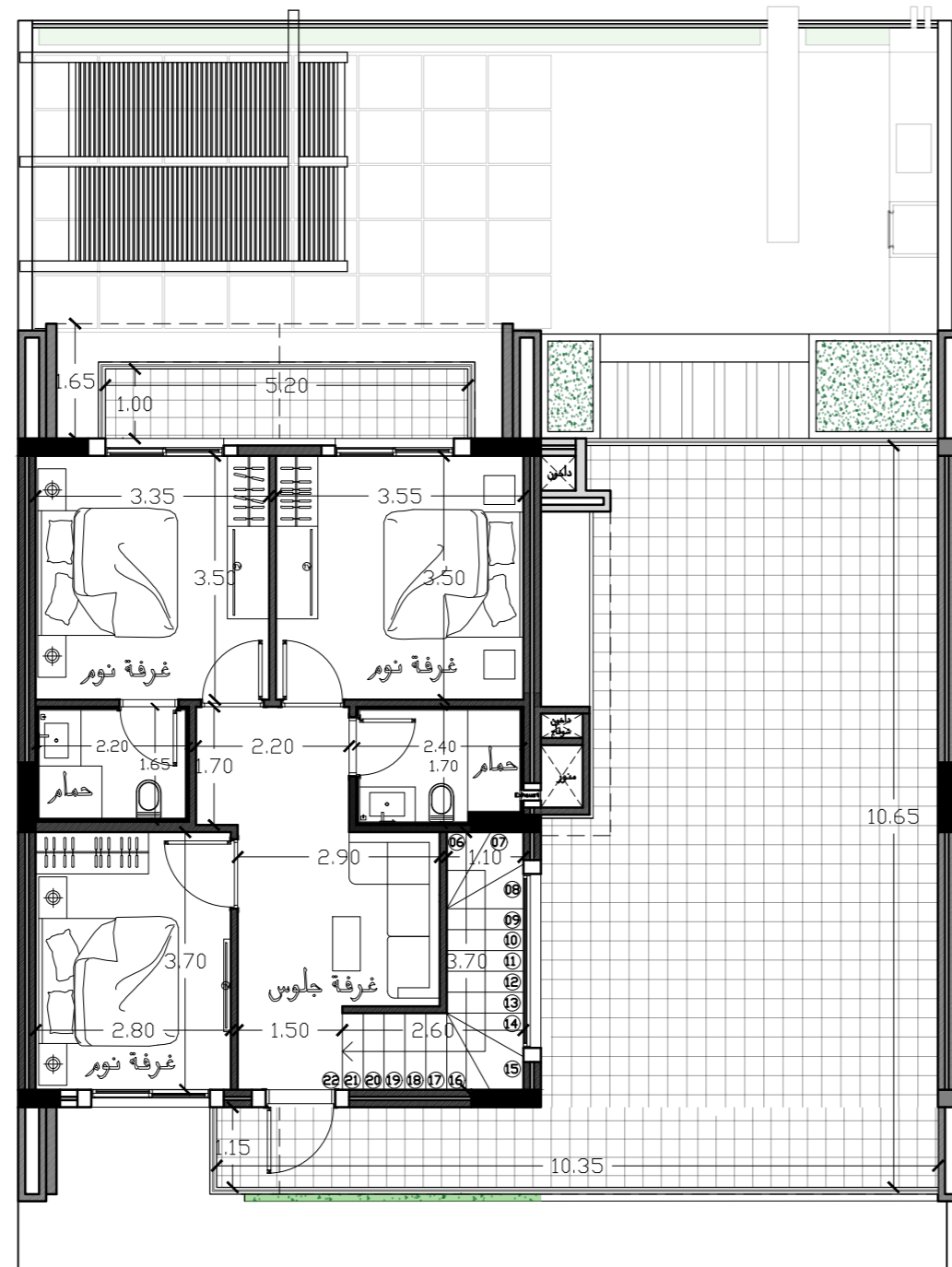





	Living Area	105 m ²
	Covered Parking	32 m ²
	Balcony + covered front yard	29 m ²
	Landscaped Garden	59 m ²
	Garden	0 m ²
	Front Yard	14 m ²
	Outdoor Parking	0 m ²
	Terrace	0 m ²

Villa 55

Type D

First Floor Plan



 Living Area	78 m ²
 Balcony	11 m ²
 Terrace	61 m ²



