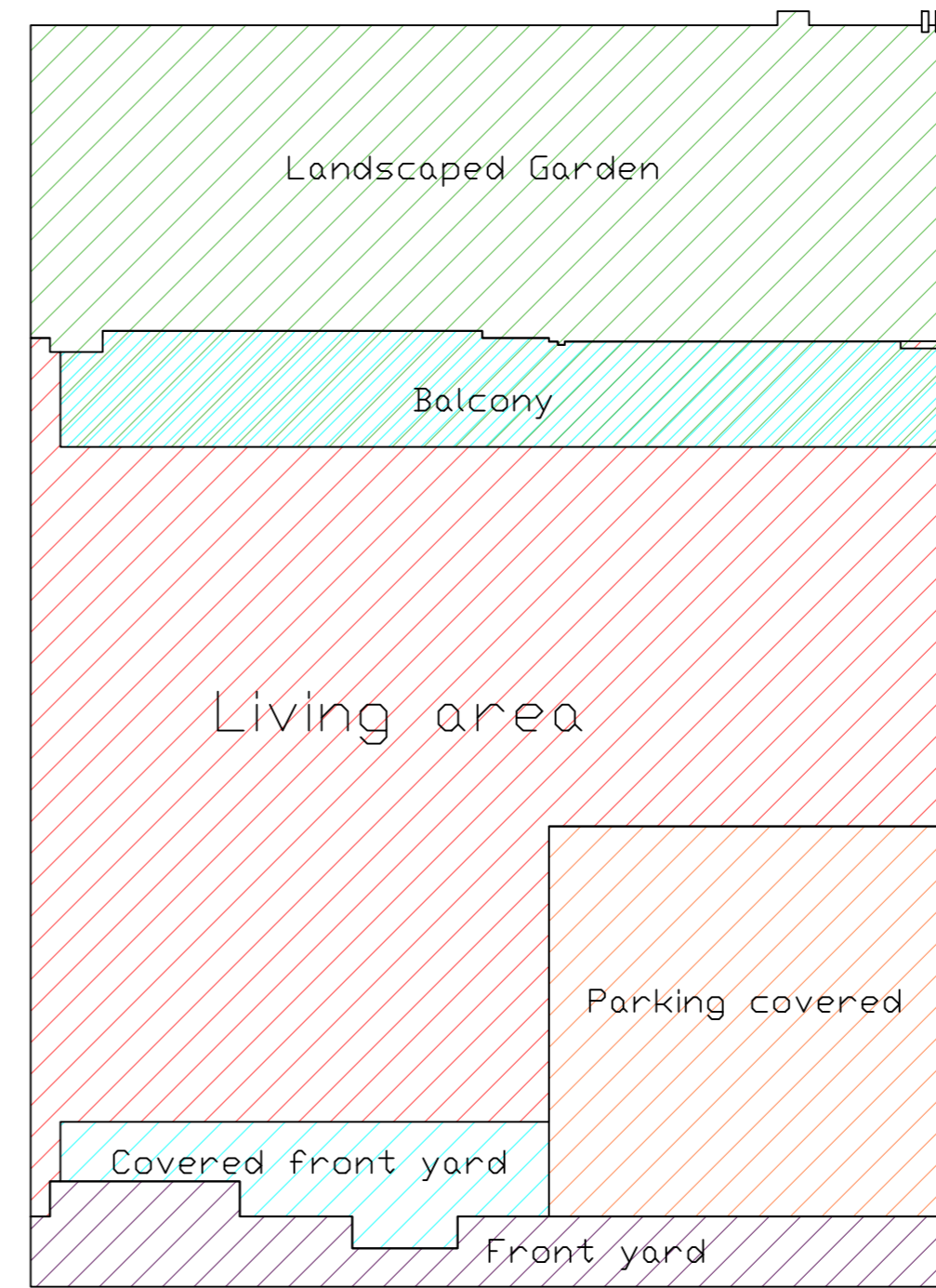
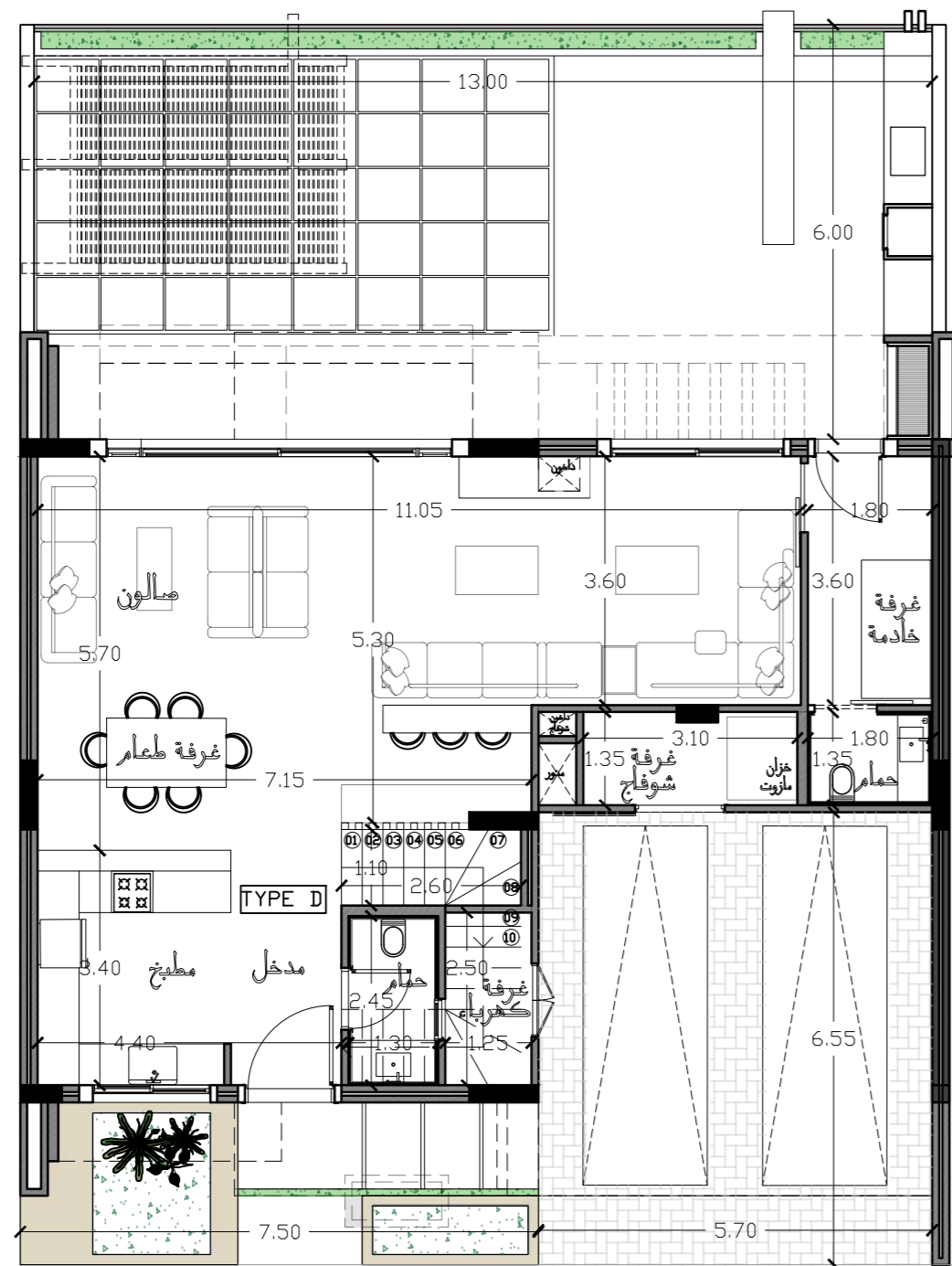


Villa 60 Total Saleable Area : 305 m2

Type D

Ground Floor Plan

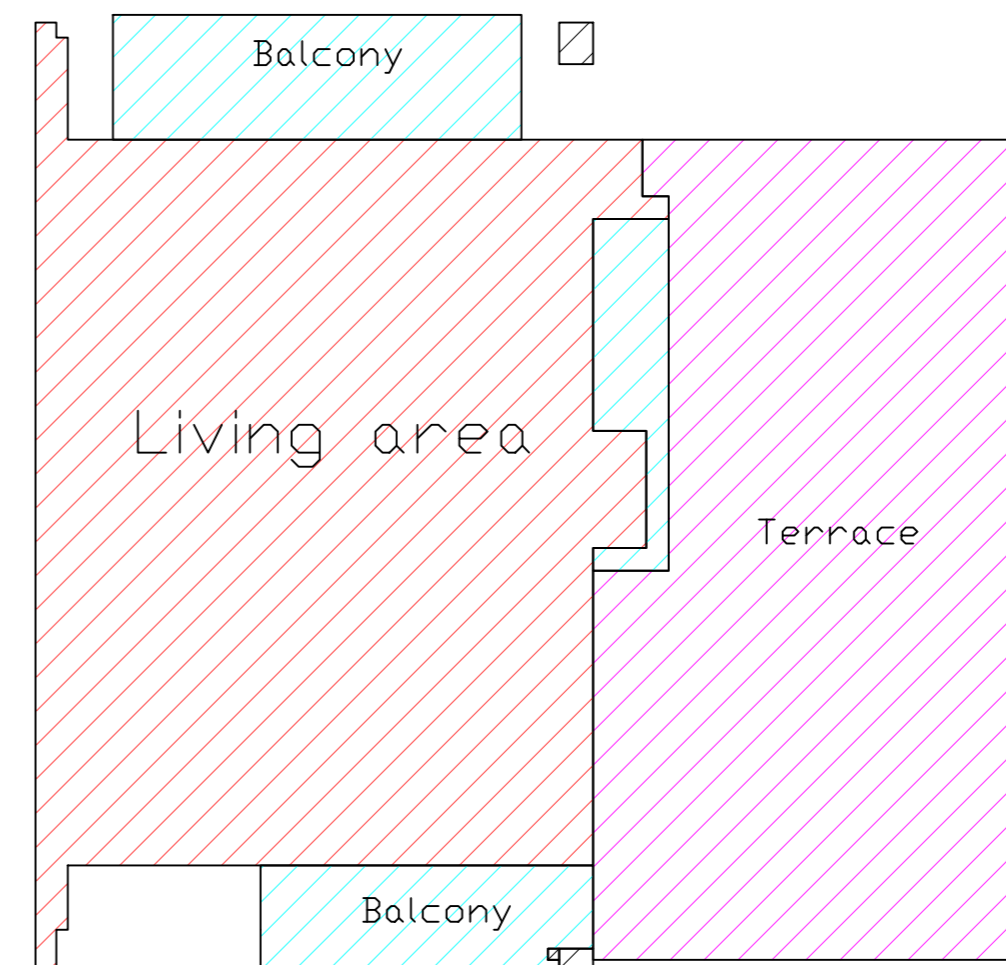
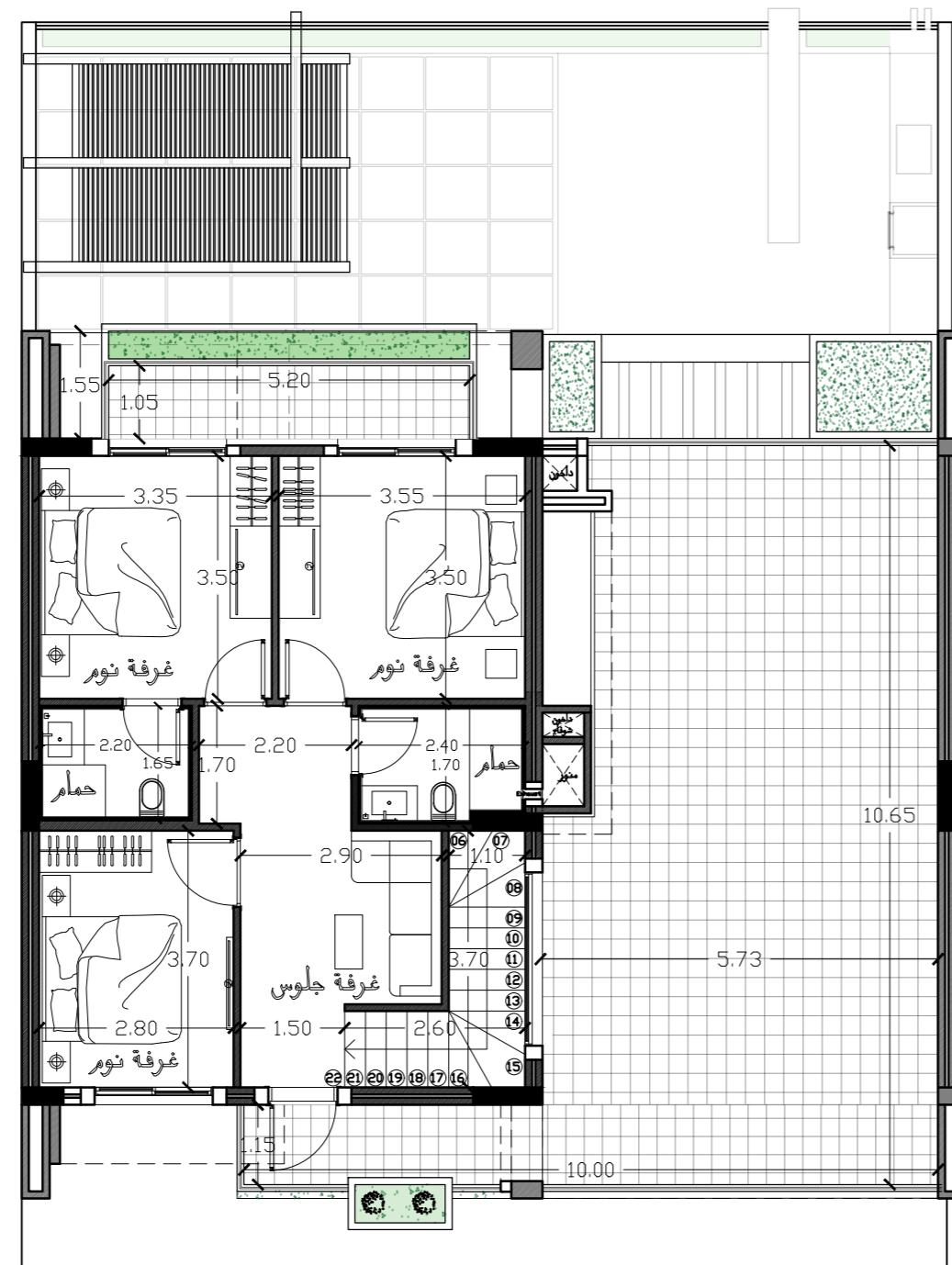



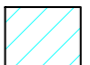

	Living Area	105 m ²
	Covered Parking	32 m ²
	Balcony + covered front yard	29 m ²
	Landscaped Garden	59 m ²
	Garden	0 m ²
	Front Yard	14 m ²
	Outdoor Parking	0 m ²
	Terrace	0 m ²

Villa 60

Type D

First Floor Plan



	Living Area	76 m ²
	Balcony	19 m ²
	Terrace	57 m ²



