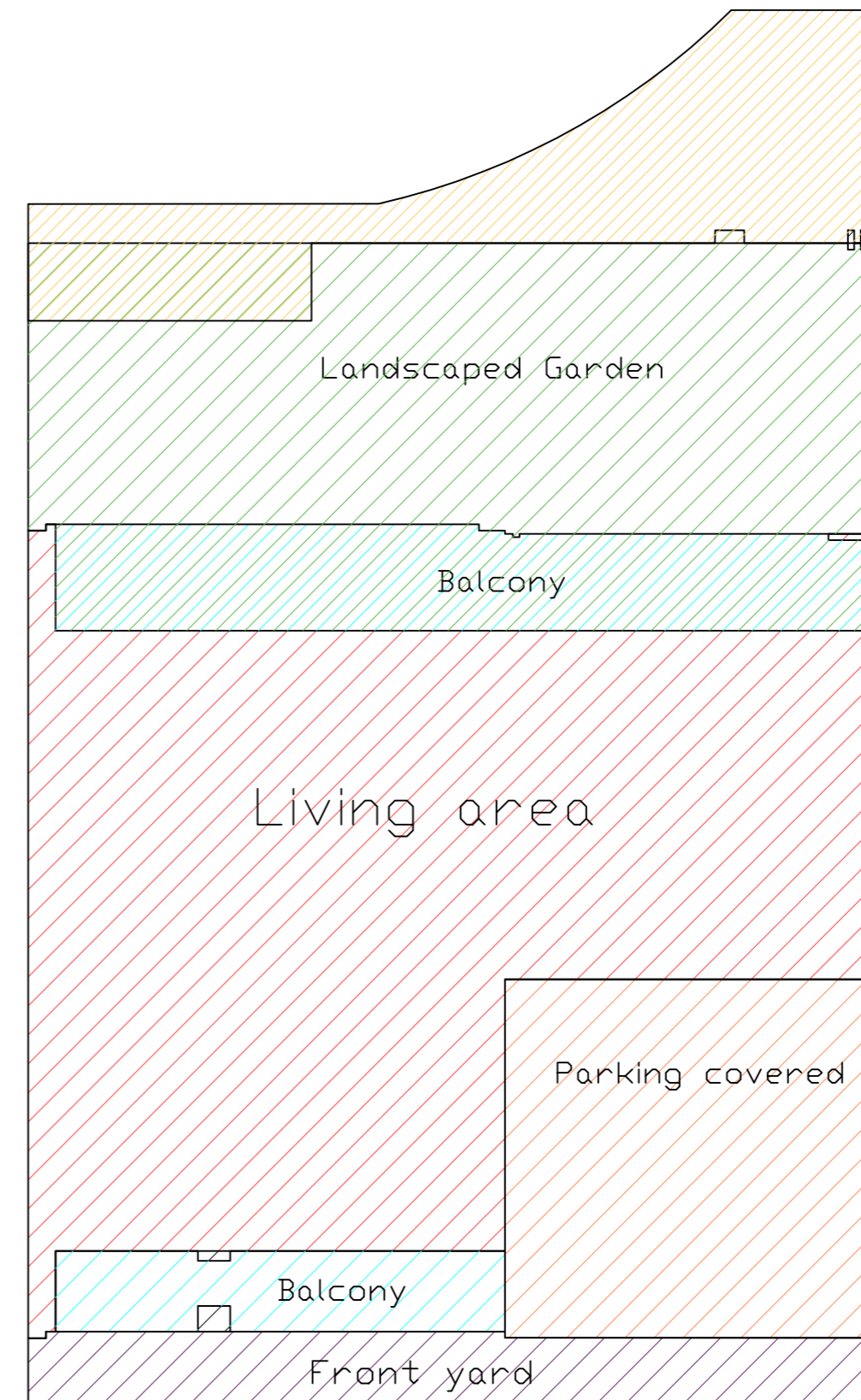
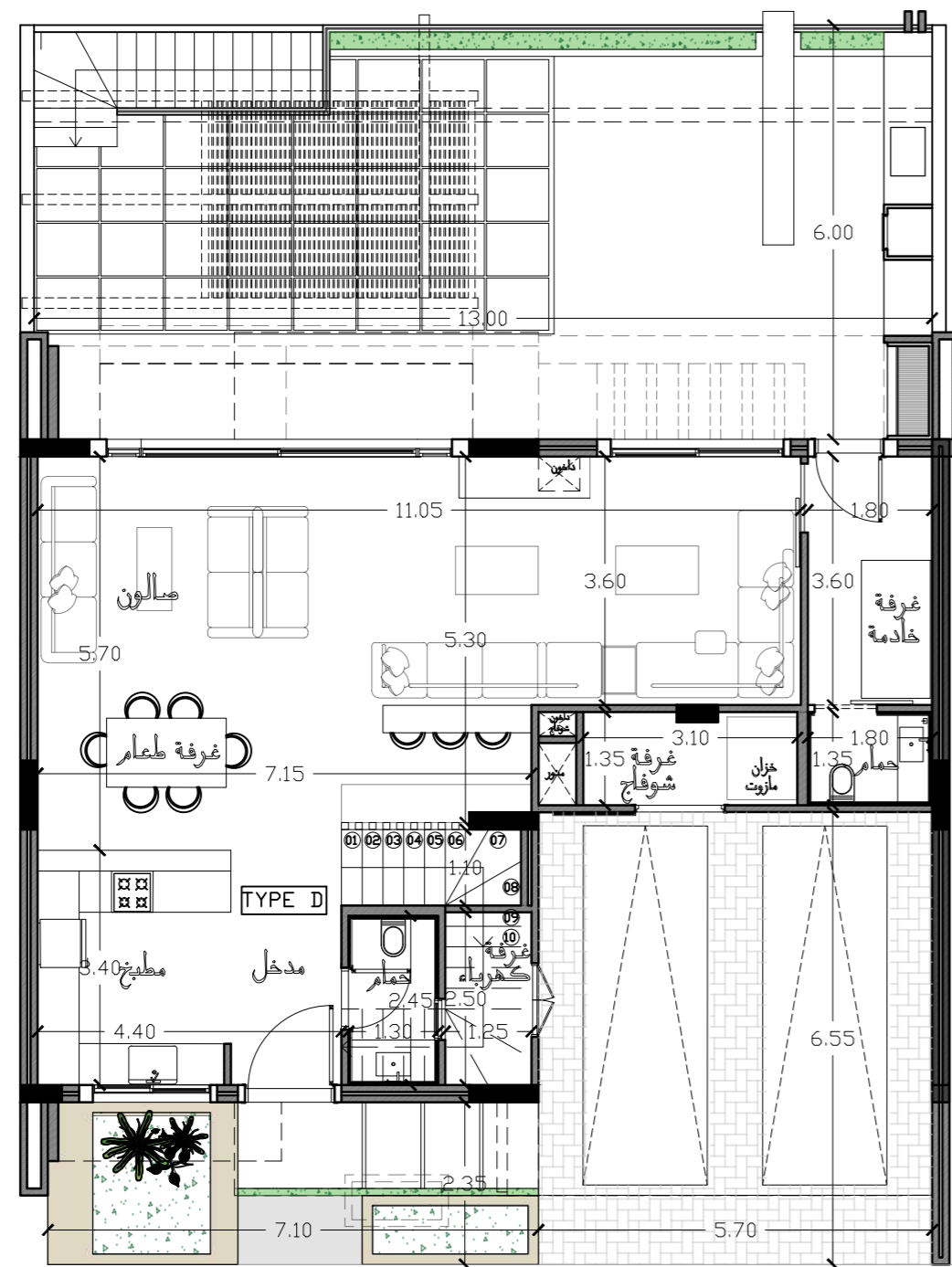


# Villa 66 Total Saleable Area : 314 m<sup>2</sup>

## Type D

### Ground Floor Plan

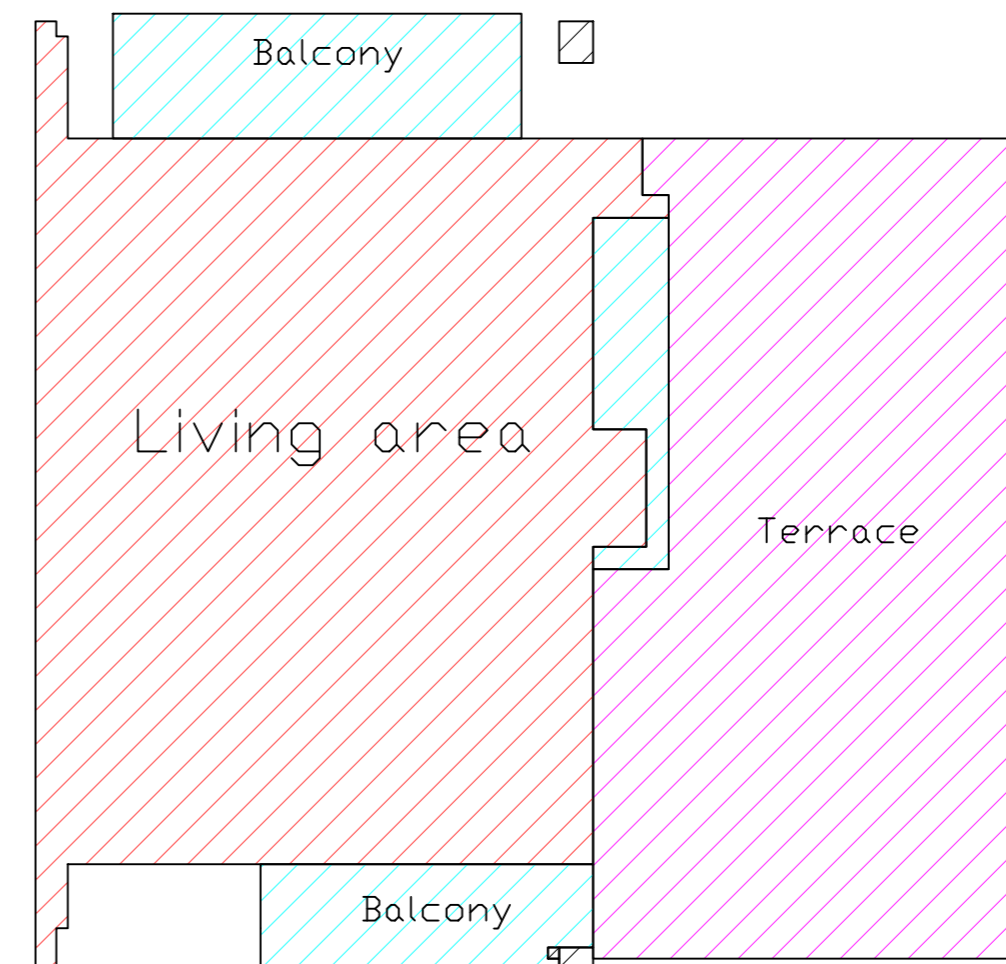
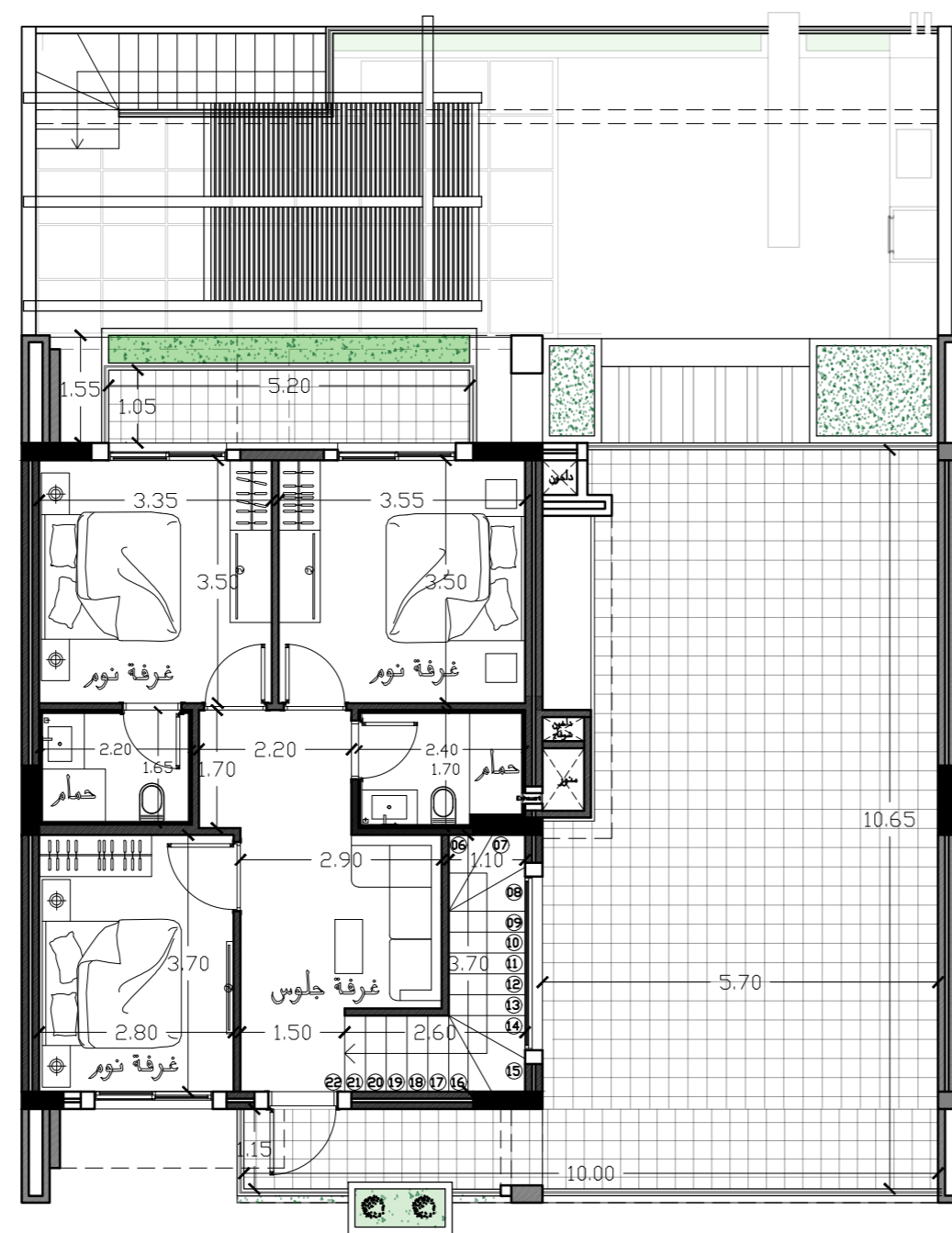


	Living Area	105 m <sup>2</sup>
	Covered Parking	32 m <sup>2</sup>
	Balcony + covered front yard	29 m <sup>2</sup>
	Landscaped Garden	59 m <sup>2</sup>
	Garden	27 m <sup>2</sup>
	Front Yard	14 m <sup>2</sup>
	Outdoor Parking	0 m <sup>2</sup>
	Terrace	0 m <sup>2</sup>

# Villa 66

## Type D

### First Floor Plan



	Living Area	76 m <sup>2</sup>
	Balcony	19 m <sup>2</sup>
	Terrace	57 m <sup>2</sup>



