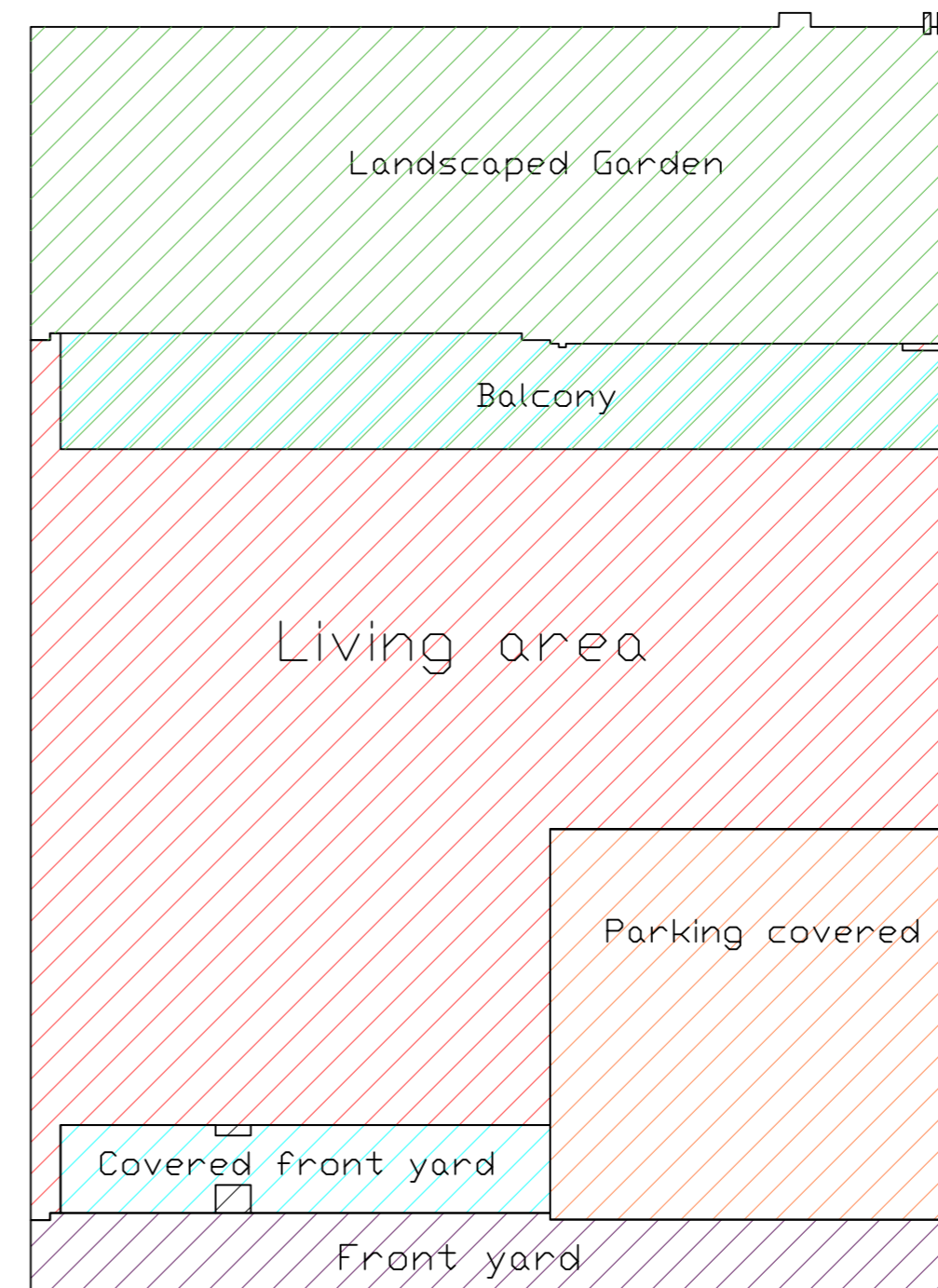
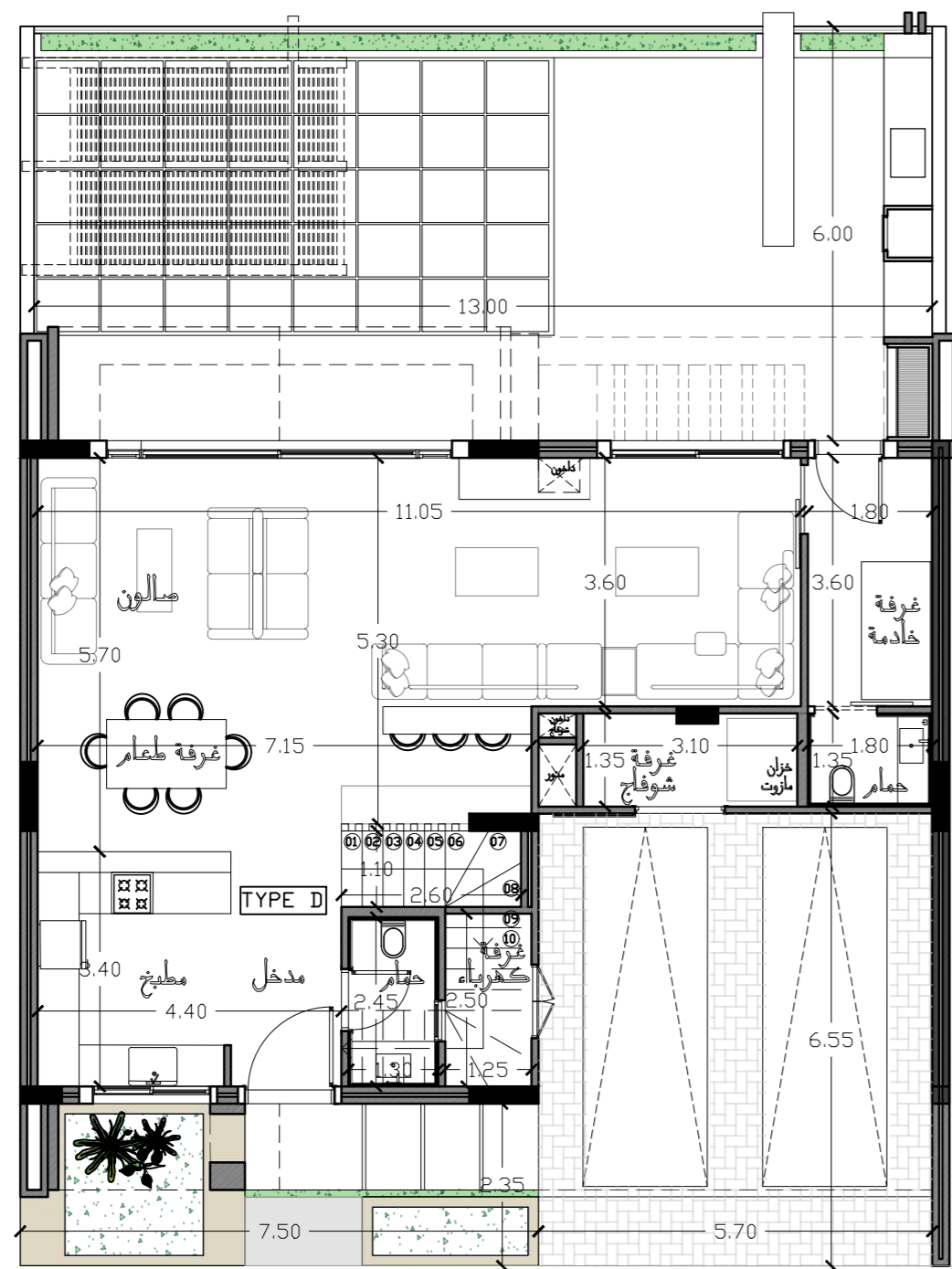


Villa 67 Total Saleable Area : 300 m²

Type D

Ground Floor Plan

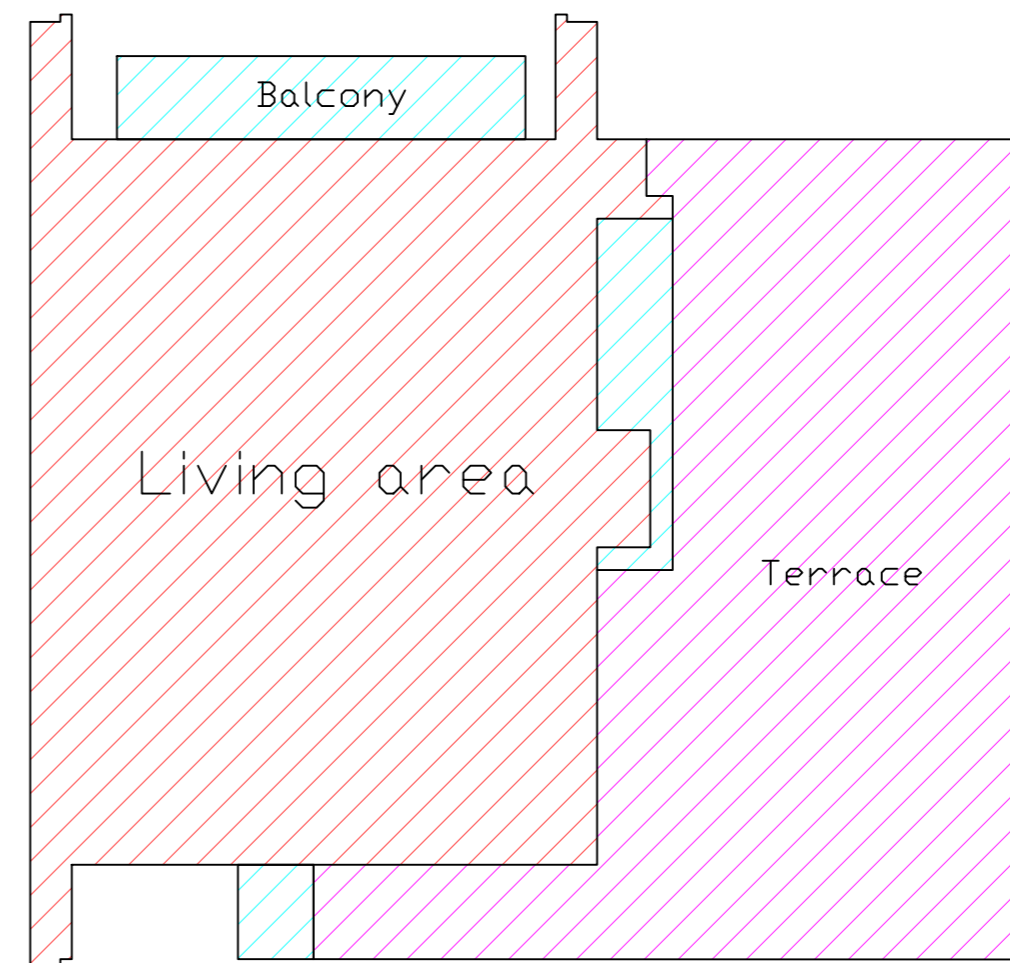
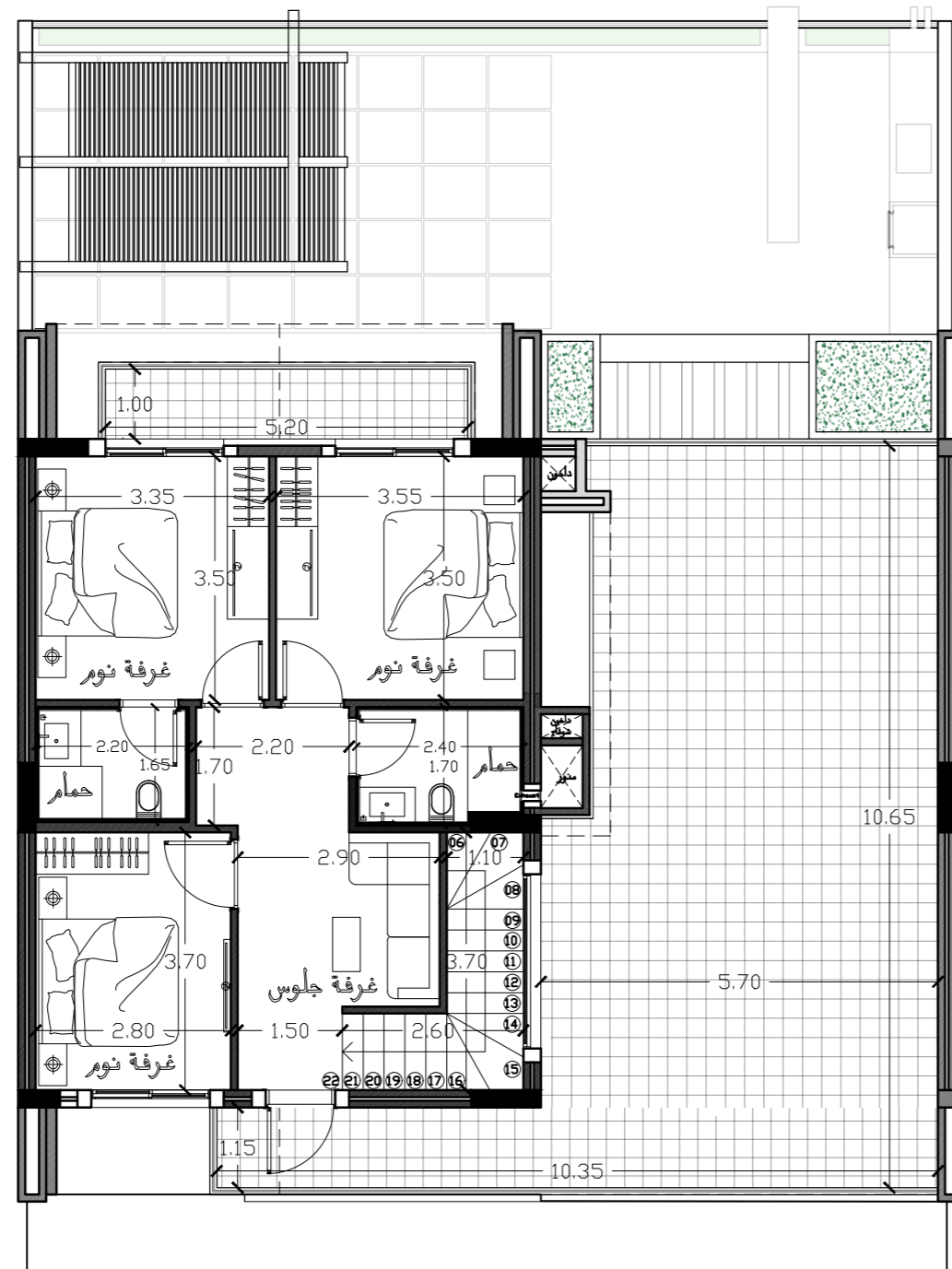



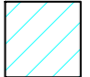

| | | |
|---|------------------------------|--------------------|
|  | Living Area | 105 m ² |
|  | Covered Parking | 32 m ² |
|  | Balcony + covered front yard | 29 m ² |
|  | Landscaped Garden | 59 m ² |
|  | Garden | 0 m ² |
|  | Front Yard | 14 m ² |
|  | Outdoor Parking | 0 m ² |
|  | Terrace | 0 m ² |

Villa 67

Type D

First Floor Plan



| | | |
|---|-------------|-------------------|
|  | Living Area | 78 m ² |
|  | Balcony | 11 m ² |
|  | Terrace | 61 m ² |



